



# WCPSS ENROLLMENT PLAN, 2019-20

A MULTI-YEAR APPROACH TO GROWTH MANAGEMENT

ADDITIONAL ITEMS

Prepared by: Office of Student Assignment

Board of Education Meeting  
November 20, 2018

# Providing relief to overcrowded schools

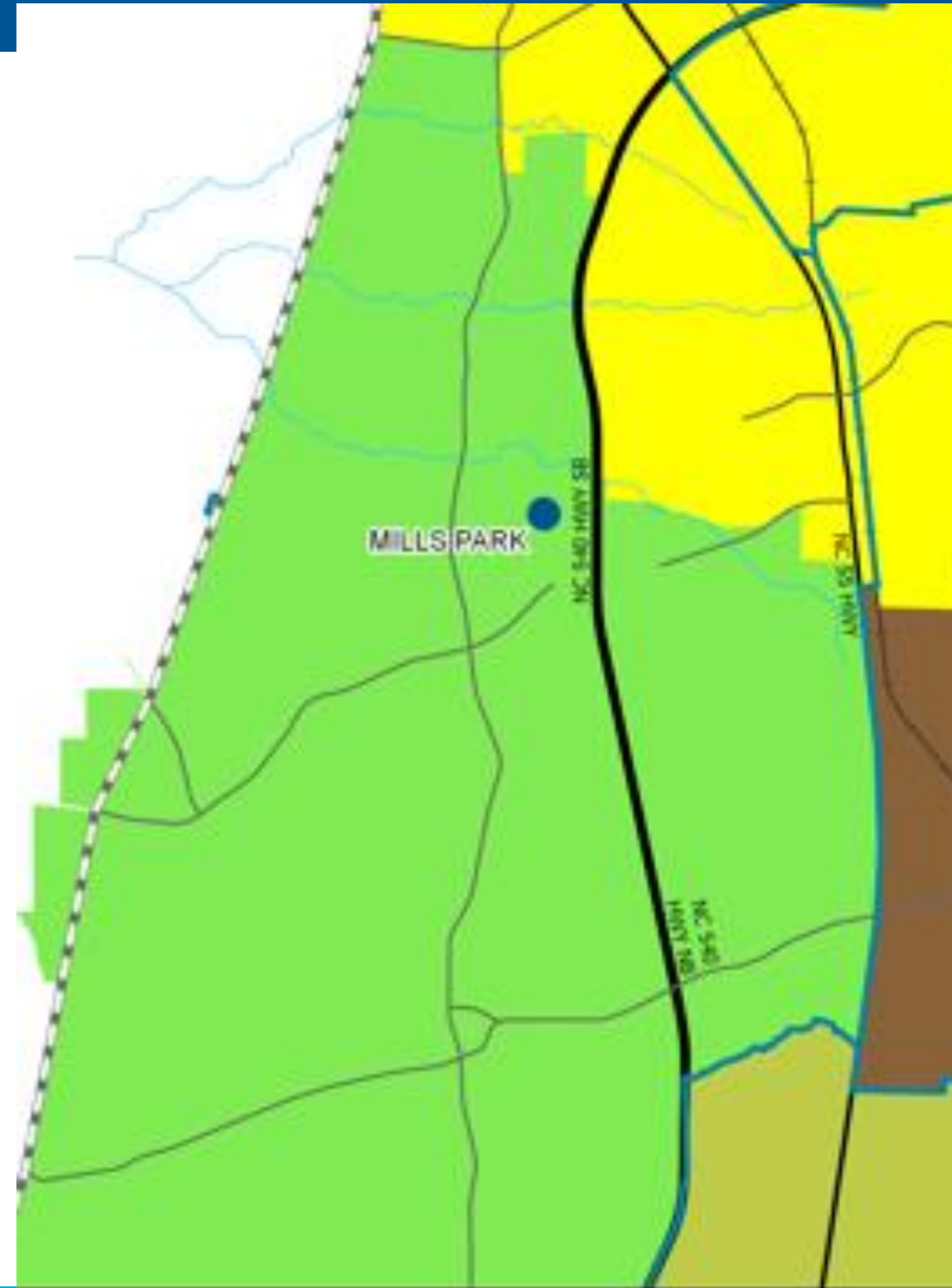
Staff was instructed by the Board of Education to review base attendance areas for parcels of land that could possibly be assigned to a school that has available seats for future students.

Potentially impacted base attendance areas:

- Mills Park Middle
- Oakview Elementary

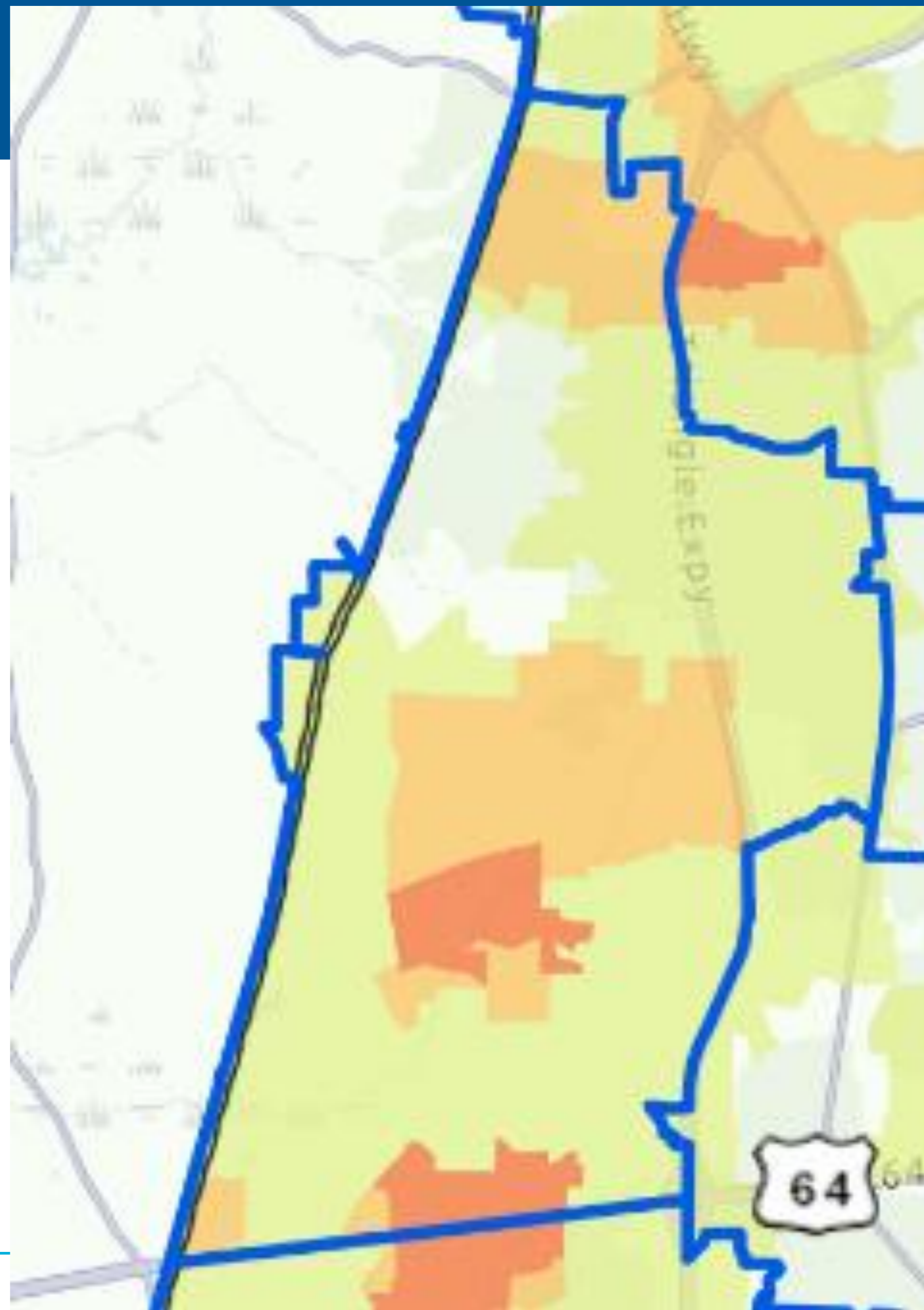
# Mills Park Middle School

- Current enrollment:  
1,756
- Projected 2019-2020 enrollment:  
1500+
- Enrollment Cap Status:  
Capped since 2014  
(currently 190 students on wait list)



# Mills Park Middle School

Projected 5 year growth



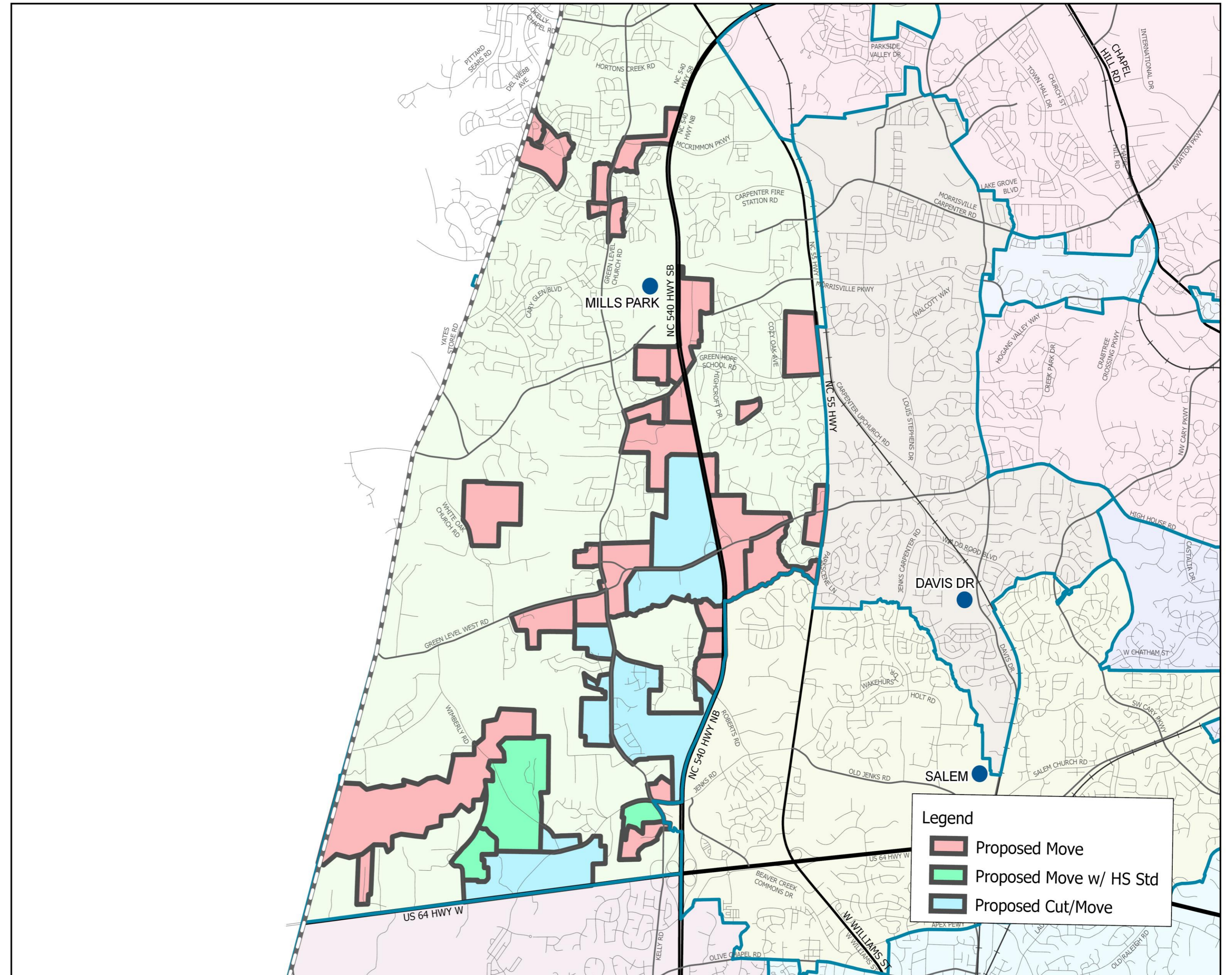
# Mills Park Middle School

In an effort to get ahead of growth in the area, staff has identified several areas of land:

- Areas with no current students
- Areas with only high school students
- Areas with students, but vacant land within the area that can be assigned elsewhere

# Mills Park Middle School

- Red areas are vacant land with no students
- Green areas have only high school students
- Blue areas have students, but vacant land within the area that can be assigned elsewhere



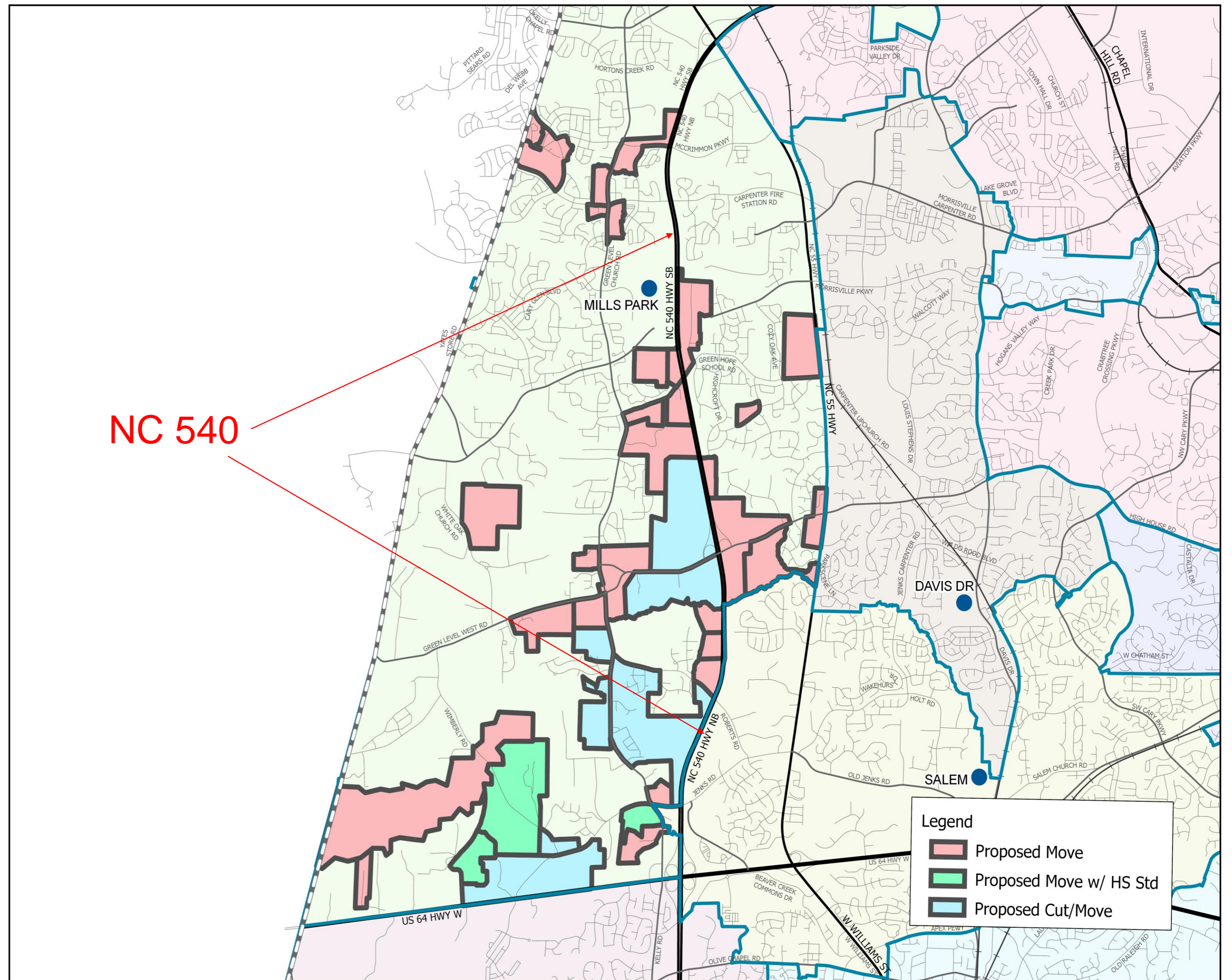
# Mills Park Middle School

## Staff Proposal

Assign the entire area west of 540 to Salem Elementary/Salem Middle

Any changes made will not change the school assignment for a student, but could possibly change their base school.

Area east of NC 540 will be addressed as part of a more comprehensive review of the entire district in the coming months



# Oakview Elementary School

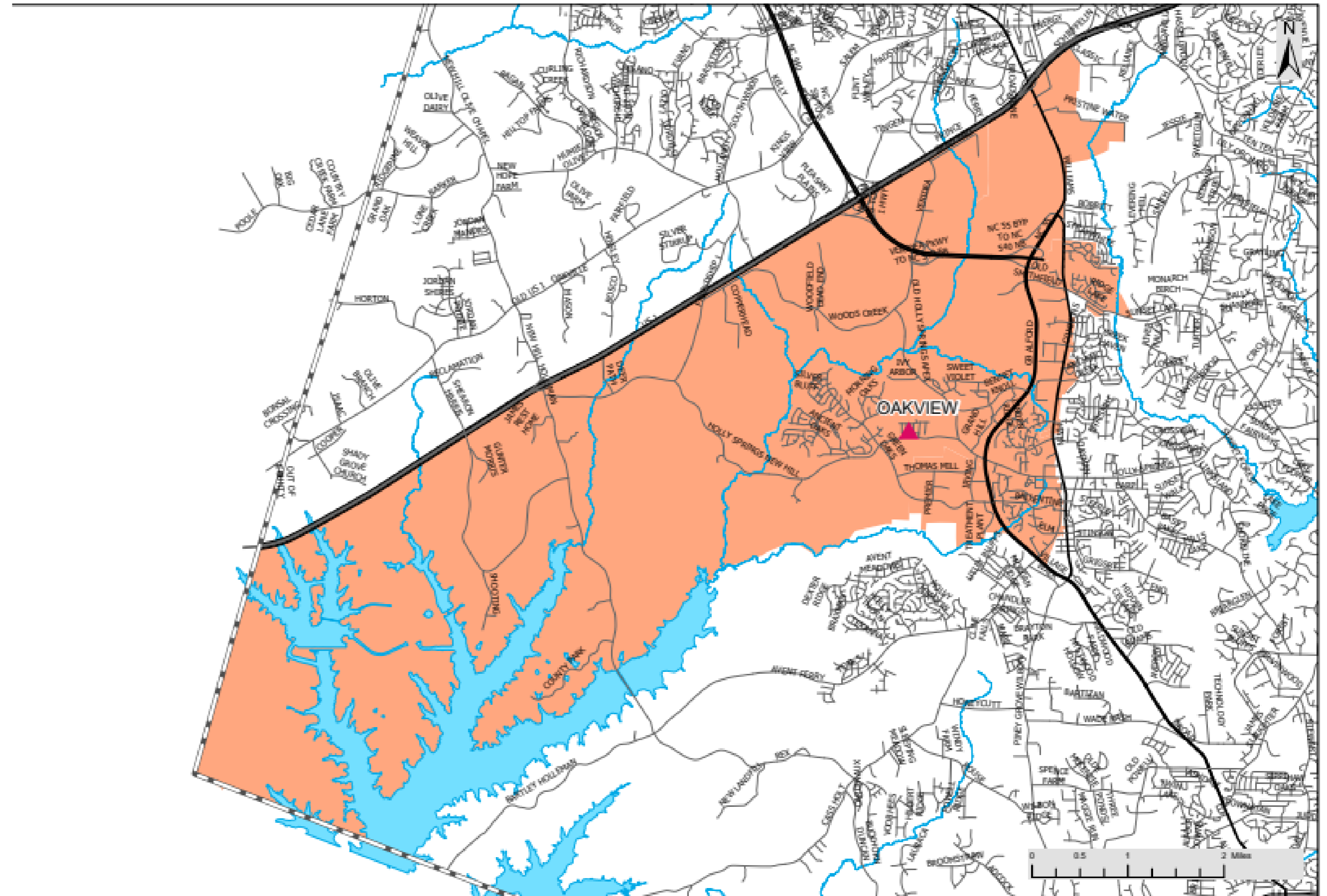
- Current enrollment:  
914

- Projected 2019-2020 enrollment:

950+

- Enrollment Cap Status:

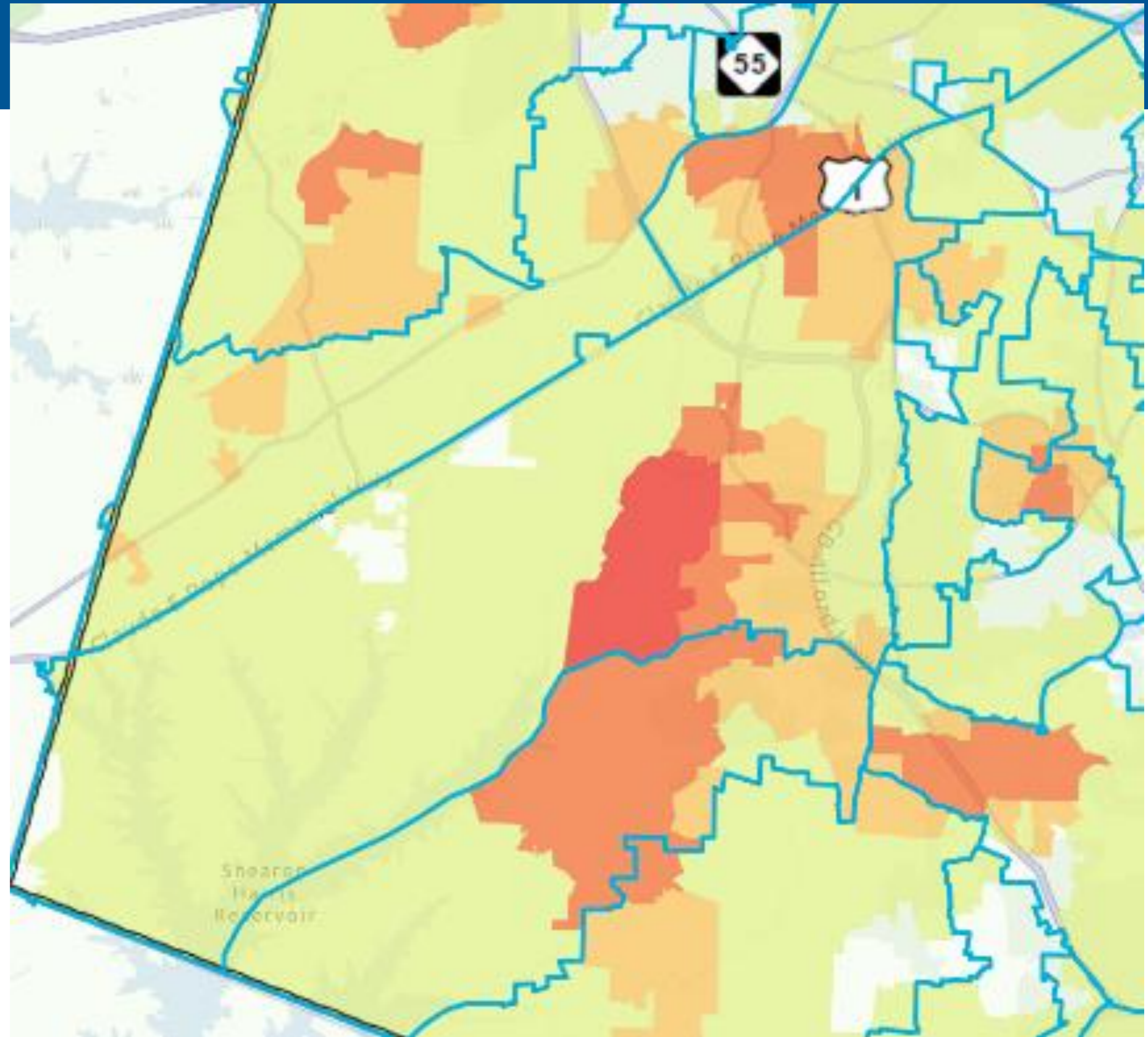
May be recommended for 2019-2020



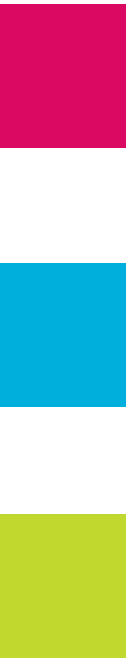


# Oakview Elementary School

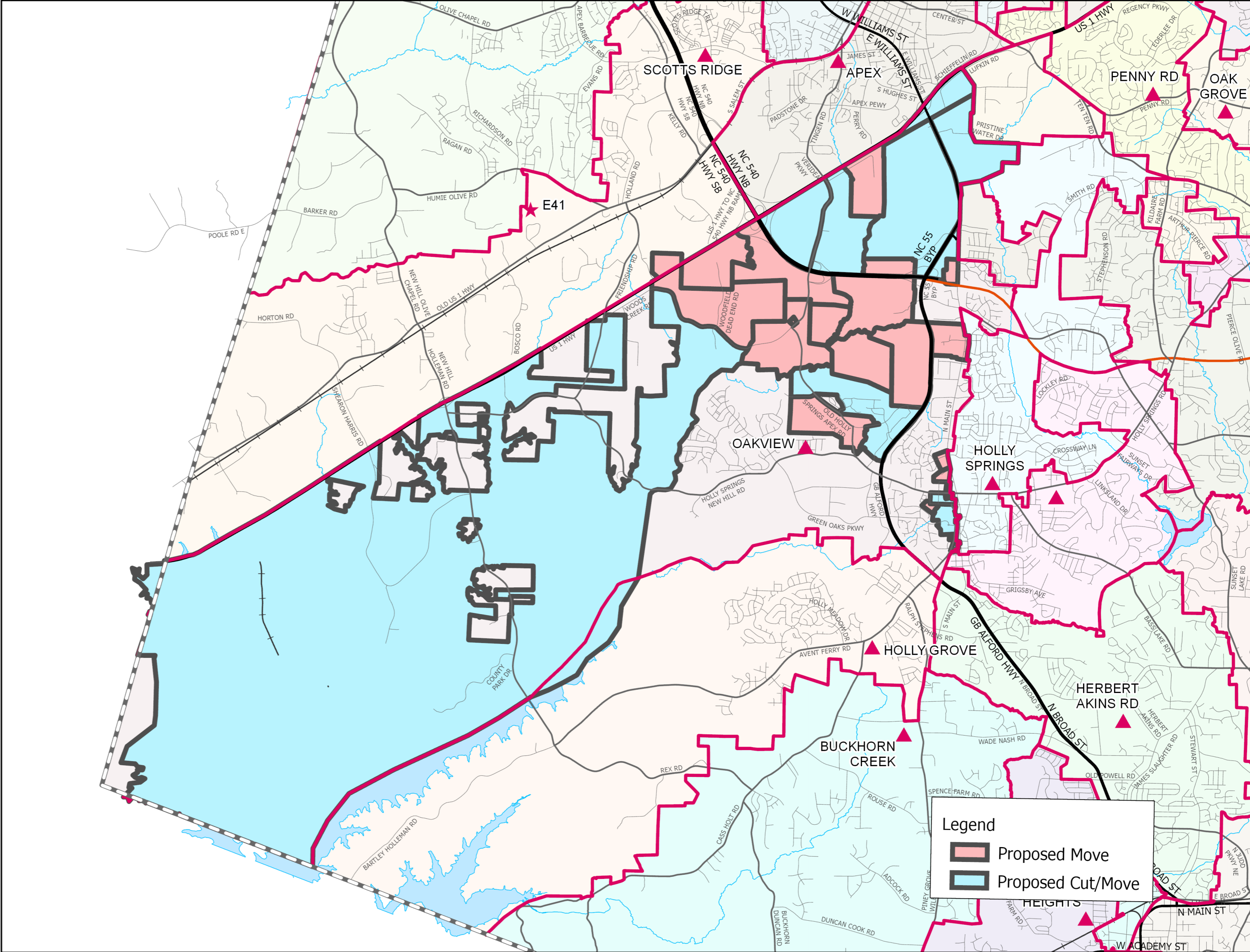
Projected 5 year growth



# Oakview ES



- Red areas are vacant land with no students
- Blue areas have students, but vacant land within the area that can be assigned elsewhere

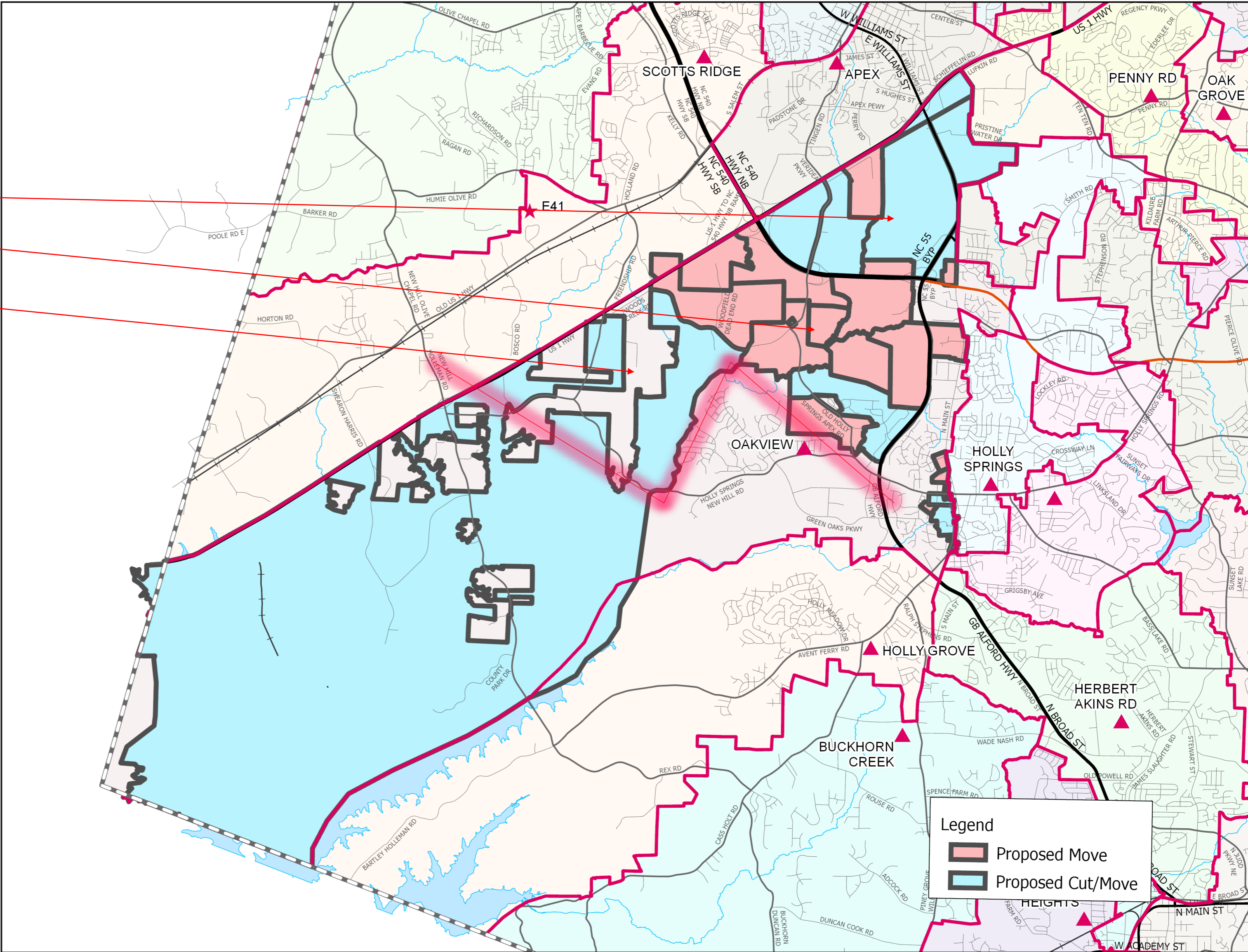


# Oakview ES

## Staff Proposal

Assign selected areas to Holly Springs Elementary/Lufkin Road Middle

Any changes made will not change the school assignment for a student, but could possibly change their base school.



Should staff bring any/all of these recommendations to the Board Meeting to be approved for 2019-2020?